

Robust Inertial Post-Processing Aided by Trimble ProPoint GNSS Technology for Urban HD Mapping and Autonomous Navigation

Jau-Hsiung Wang¹, Joe J. Hutton¹, James Lutes¹, Xue-Fen Zhang¹, Martin Fuchs², Joachim Tappe² and Marco Osmo²

¹ Trimble Navigation Limited, 85 Leek Cr., Richmond Hill, Ontario, Canada L4B 3B3

² Trimble Navigation Limited, Haringstrasse 19, Hohenkirchen-Siegersbrunn Munich, 85635, Germany

Abstract

GNSS (Global Navigation Satellite Systems) along with Micro Electro Mechanical System (MEMS) inertial sensors have been the most cost-effective and productive solution to provide seamless georeferencing information for High-Definition (HD) Mapping and Autonomous Navigation for decades. In dense urban environments, however, obtaining robust and precise GNSS-aided MEMS inertial navigation solutions becomes quite challenging due to more GNSS measurement degradations and outages and hence larger inertial error drifts. This paper presents a new post-processed realization of the Trimble® ProPoint™ GNSS technology integrated into the Trimble® Applanix POSPac™ 9 aided-inertial software for robust and precise urban HD mapping and autonomous navigation. The new POSPac not only supports all the latest GNSS satellites, signals and frequency bands but also properly handles the multipath errors and outliers and effectively fuses GNSS data into a robust and accurate aided-inertial position and orientation solution. Real-world results from over 72 hours of dense urban area data show the new POSPac achieved over 100% position accuracy improvement for Real-Time Kinematic (RTK) aided MEMS inertial systems.

Keywords

Urban HD Mapping, Autonomous Navigation, GNSS-Aided Inertial


1. Introduction


HD Mapping and Autonomous Navigation require robust and precise geographic position and orientation of the moving platforms to geo-code each pixel or point collected by an imaging sensor. GNSS along with inertial sensors have been used to provide seamless georeferencing for mobile mapping and navigation for decades [1]. GNSS measurements are used not only to provide precise positions but also to control the errors of the navigation solution computed by integrating acceleration and angular rate measurements made by an Inertial Measurement Unit (IMU) into position, velocity, and orientation.


In dense urban environments, obtaining robust and precise GNSS-aided inertial navigation solutions becomes quite challenging especially when the cost-effective MEMS IMUs are used. This is because GNSS measurements are subject to multipaths, signal diffraction and blockages which might result in large error drifts or jumps in the integrated navigation solutions. Various approaches have been developed to improve the GNSS-aided inertial navigation solutions in urban environments. Scherzinger developed tightly coupled inertial/GPS integration with floated ambiguity estimation and fixed integer search in a single Kalman filter to achieve fast integer ambiguity recovery and minimize the inertial position error drifts after GPS outages [2,3]. Wang developed intelligent data fusion and processing techniques for a low-cost MEMS inertial/GPS

WIPHAL 2023: Work-in-Progress in Hardware and Software for Location Computation, June 06–08, 2023, Castellon, Spain

✉ jhwang@applanix.com (J. Wang); jhutton@applanix.com (J. Hutton); jlutes@applanix.com (J. Lutes); xfzhang@applanix.com (XF. Zhang); martin_fuchs@trimble.com (M. Fuchs); joachim_tappe@trimble.com (J. Tappe); marco_osmo@trimble.com (M. Osmo)

 0009-0004-5274-8026 (J. Wang)

 © 2023 Copyright for this paper by its authors.
Use permitted under Creative Commons License Attribution 4.0 International (CC BY 4.0).

 CEUR Workshop Proceedings (CEUR-WS.org)

integration system to improve urban navigation performance [4]. Wang and Julien explored the benefits of incorporating carrier phase measurements from both GPS and GLONASS in an inertial navigation system for urban applications [5]. With the advent of modern GNSS technologies more GNSS satellites and signals are now available in the sky which provides better GNSS measurement redundancy to aid inertial navigation system but at the same time increases the complexity of signal filtering, quality assurance and optimal data fusion in urban environments.

This paper presents a new post-processed realization of the Trimble's latest ProPoint GNSS technology into the Trimble's Applanix POSpac 9 aided-inertial software to deliver robust and accurate navigation solutions for urban HD mapping and autonomous navigation. Trimble ProPoint GNSS technology not only supports all modernized satellites and new signals but also employs advanced GNSS signal filtering and quality assurance technologies to provide highly available and reliable precise GNSS solutions. This paper is structured as follows. Section 2 introduces the generic GNSS RTK positioning algorithm and discusses the performance metrics in GNSS challenging environments. Section 3 presents the Trimble ProPoint GNSS RTK technology and demonstrates its superior GNSS performance in urban areas. In Section 4, the post-processed ProPoint RTK aided-inertial processing technology employing tightly coupled optimal sensor fusion methods is presented. The example of the integrated navigation solution performance improvement in urban areas is also demonstrated. Finally, real-world results using over 72 hours data collected in dense urban environments for accuracy assessments are provided in section 5.

2. GNSS RTK Positioning

GNSS positioning is based on the line-of-sight signals from the satellites in space to measure the ranges from known satellite positions to unknown positions on land, at sea, in air and space [6]. With the signal wavelength of centimeter level, carrier phase measurements are used to estimate satellite-to-receiver range with high accuracy and hence to provide precise GNSS positioning. However, the quality of carrier phase measurements is affected by a variety of biases and errors during signal propagation. Equation (1) describes the measurement model of carrier phase, $\phi^k(j)$, from the k th satellite at epoch j [7].

$$\phi^k(j) = r^k(j) + c \left(dT(j) - dt^k(j) \right) - I^k(j) + T^k(j) + \lambda N^k + \varepsilon^k(j), \quad (1)$$

where $r^k(j)$ is the true range, $dT(j)$ is the receiver clock offset, $dt^k(j)$ is the satellite clock error, $I^k(j)$ is the ionosphere delay, $T^k(j)$ is the troposphere delay, N^k is the carrier phase integer ambiguity, λ is the carrier phase wavelength, $\varepsilon^k(j)$ is the phase multipath and noise.

The propagation errors that are similar between nearby receivers including satellite clock error, ionosphere delay and troposphere delay can be removed by between-receivers carrier phase differencing, denoted as Δ , as shown in Equation (2).

$$\Delta\phi^k(j) = \Delta r^k(j) + c\Delta dT(j) + \lambda\Delta N^k + \Delta\varepsilon^k(j), \quad (2)$$

where $\Delta\phi^k(j)$ is the between-receivers single-differenced carrier phase measurement, $\Delta r^k(j)$ is the single-differenced true range, $\Delta dT(j)$ is the single-differenced receiver clock offset, ΔN^k is the single-differenced carrier phase integer ambiguity, and $\Delta\varepsilon^k(j)$ is the single-differenced phase multipath and noise.

Provided the integer nature of carrier phase ambiguities and redundant carrier phase measurements from different satellites, carrier phase ambiguities can be resolved by using integer least-squares estimation such as Least-squares AMBiguity Decorelation Adjustment (LAMBDA) method [8]. After the integer ambiguities are determined, the precise ranges between satellites and receiver can be obtained and the receiver clock offset and receiver coordinates can be calculated by solving the Equation (3) via linearizing it about an approximate user position and solving iteratively using least squares or Kalman filtering algorithms.

$$\hat{r}^k = \sqrt{(x^k - X)^2 + (y^k - Y)^2 + (z^k - Z)^2} + dT \quad k = 1, 2, \dots, K, \quad (3)$$

where K is the total number of satellites used, \hat{r}^k is the precise range estimate of satellite k , (x^k, y^k, z^k) are the known coordinates of satellite k , dT is the receiver clock bias and (X, Y, Z) are the user coordinates to be determined.

The quality of the precise GNSS RTK position estimates depends basically upon two factors [7]:

1. The number of satellites being tracked, and their spatial distribution characterized by the Position Dilution of Precision (PDOP). The smaller the PDOP, the better the satellite geometry.
2. The quality of the range information from carrier phase measurements.

For short baseline single base RTK positioning, most of the carrier phase measurement biases can be removed by between-receiver single differencing because of the strong correlations of the errors in nearby geographic locations. In this case the multipaths and noises become the remaining dominant errors especially in GNSS harsh environments. Therefore, the key to obtaining precise solutions in such applications is to have the capability of processing more satellites and signals and effectively mitigating multipath errors in the GNSS RTK engine.

3. Trimble ProPoint Technology

Trimble ProPoint GNSS technology along with Trimble Maxwell 7 receivers support all modernized satellites and new signals transmitted on all frequencies which include:

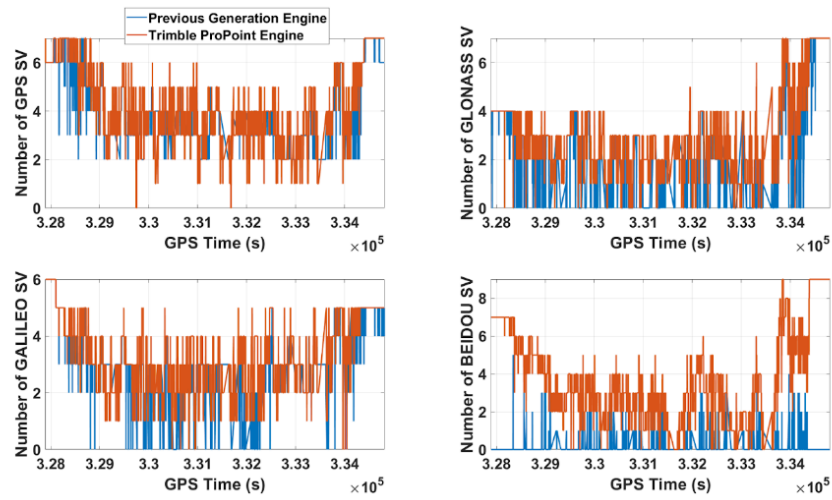
- GPS: L1 C/A, L1C, L2E, L2C, L5
- GLONASS: L1 C/A, L1P, L2P, L2 C/A, L3 CDMA
- Galileo: E1, E5A, E5B, E5AltBOC, E6
- BeiDou: B1C, B1i, B2i, B2A, B2B, B3i
- QZSS: L1 C/A, L1S, L2C, L5, LEX
- IRNSS: S1 C/A, L5
- SBAS: L1 C/A, L5
- MSS: Trimble RTX, OmniSTAR

Trimble ProPoint GNSS technology is capable of using all available signal inputs to deliver more accurate RTK solutions. The increased number of GNSS observables and signals used in the RTK engine will improve the measurement availability and redundancy to better mitigate the impacts of multipaths, signal diffractions and blockages in GNSS challenging environments.

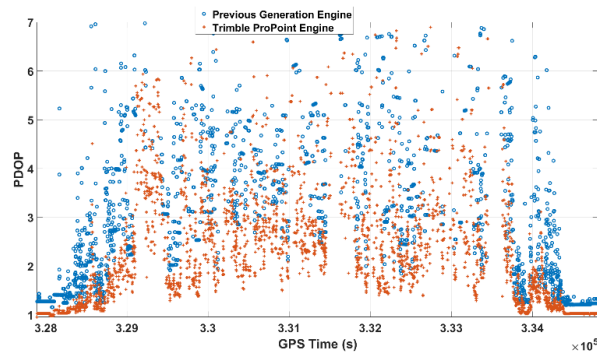
Trimble ProPoint was also designed with an optimal data signal filtering approach by combining all of the measurements together into a single filter and estimating the carrier integer ambiguities. This approach provides the most flexible use of all available GNSS signals. The ProPoint engine can use any or all of the frequencies and signals, including individually in harsh tracking environments, to generate the optimal solutions. Empowered with the new robust estimation techniques, the ProPoint engine identifies any measurement that does not match a stochastic model and then will either reject or correct the measurement or adjust the stochastic model assigned to the measurement. In dense urban environments where the GNSS measurements might contain multiple deteriorated data and outliers, Trimble ProPoint is able to provide precise and reliable position estimation by identifying and removing the outliers from the measurements.

Figure 1 shows an example of (a) satellite numbers used and (b) PDOP in the previous generation engine and Trimble ProPoint engine in a downtown Toronto dataset. It can be seen that the Trimble ProPoint has used and processed more satellite observables than the previous generation engine to obtain better GNSS measurement redundancy and satellite geometry with lower PDOP. Figure 2 shows an example of the RTK positioning solution in the core downtown Toronto areas from (a) previous generation engine (b) Trimble ProPoint engine without the robust estimation (RE) techniques and (c) Trimble ProPoint engine with the RE techniques. It can be seen that the ProPoint engine has provided a lot more RTK positioning solutions than the previous generation engine and with the RE techniques Trimble ProPoint engine has identified

and removed outliers from the solutions and delivered highly available and reliable precise RTK solutions in dense urban environments.

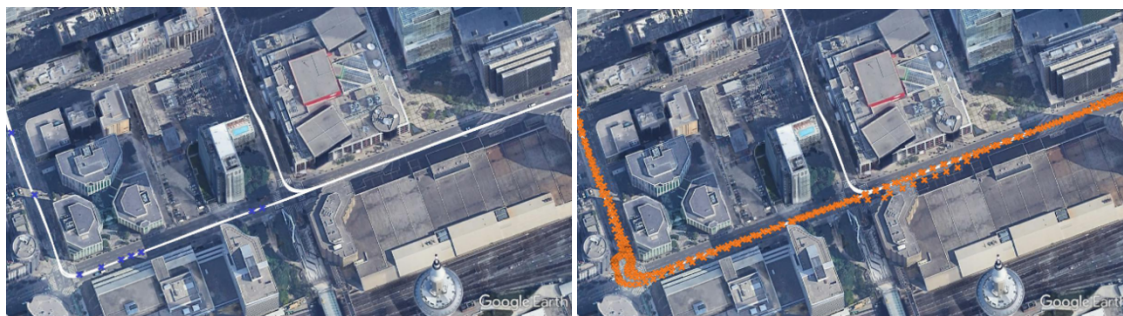


(a) Number of Satellites Used



(b) PDOP

Figure 1: Satellites Availability in Dense Urban Areas



(a) Previous Generation Solution

(b) Trimble ProPoint Solution without RE



(c) Trimble ProPoint Solution with RE

Figure 2: GNSS RTK Solutions in Dense Urban Areas

4. Post-Processed ProPoint RTK Aided-Inertial Processing

Trimble's Applanix POSPac Mobile Mapping Suite (POSPac MMS) is the industry-leading software using GNSS and inertial technology for direct georeferencing of mobile mapping sensors for all environments and platforms (air, land, marine). The latest POSPac 9 aided-inertial software has tightly integrated Trimble ProPoint GNSS engine into its new Trimble Applanix IN-Fusion+ technology to deliver more robust and accurate navigation solutions for urban HD mapping and autonomous navigation. Figure 3 illustrates the architecture of Trimble Applanix IN-Fusion+ technology comprising an "aided-inertial" navigation system or Aided INS with aiding sensor components and Trimble ProPoint engine. The IMU generates incremental velocities and angles resolved in the IMU sensor coordinate frame. The inertial navigator receives the inertial data from the IMU and computes the current IMU position, velocity, and orientation. The error estimator, which is typically a Kalman filter, receives measurements from the aiding sensors such as GNSS receivers and a precise odometer here called a distance measurement indicator (DMI) and precise GNSS data from the Trimble ProPoint engine. Incorporating the inertial and aiding sensor error models, the Kalman filter properly estimates the INS and aiding sensor errors. The error controller receives the estimated errors, computes the navigation corrections, and applies these to the inertial navigator integration processes, thereby regulating the inertial navigator errors in a closed-loop error control loop to continuously maintain the inertial navigator errors at small magnitudes.

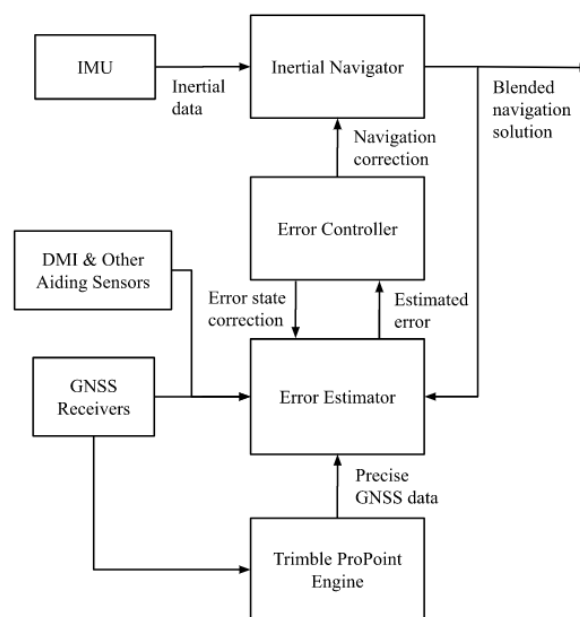


Figure 3: Trimble Applanix IN-Fusion+ Architecture

The Trimble Applanix IN-Fusion+ technology is also an optimal method of "blending" or "fusing" the information of all measurement systems into a robust and accurate position and orientation solution. It automatically adapts the measurement model according to its quality. With the Trimble ProPoint GNSS technology providing more precise and reliable GNSS RTK measurements, Applanix IN-Fusion+ technology achieves extremely robust high-rate Aided-INS position output under all types of signal environments. Figure 4 shows an example of the post-processed Smoothed Best Estimate of Trajectory (SBET) solutions generated from (a) IN-Fusion Single Base technology using the previous generation engine and (b) IN-Fusion+ Single Base technology integrated with Trimble ProPoint engine. The data were collected in the core downtown Toronto areas using Trimble Applanix LVX product equipped with a cost-effective MEMS IMU. The test trajectories were repeated for three loops for map-based performance assessment purposes. It can be seen in Figure 4 on the left-side images that the IN-Fusion+ Single Base SBET solutions are all within the vehicle lanes during a turn whereas one loop of the IN-

Fusion Single Base SBET solutions is shifted and on the edge of the curb. On the right-side images all the IN-Fusion+ Single Base SBET solutions are overlapping on the same vehicle lane correctly whereas one loop of the IN-Fusion Single Base SBET solutions does not overlap and is off by one vehicle lane. Figure 5 shows the vertical-vs-north SBET solutions generated from (a) IN-Fusion Single Base technology and (b) IN-Fusion+ Single Base technology. It can be seen that the IN-Fusion+ Single Base solutions have much better vertical trajectory overlapping than the IN-Fusion Single Base solutions. As the test was repeated on the same trajectory for three loops, the better overlapping the vertical-vs-north trajectories the more accurate the SBET solutions. Thanks to the Trimble ProPoint GNSS technology providing more accurate and reliable GNSS RTK measurements to aid the inertial navigator, the IN-Fusion+ technology has delivered more accurate and robust navigation solutions than the previous generation technology in GNSS harsh environments as shown in these preliminary test results.

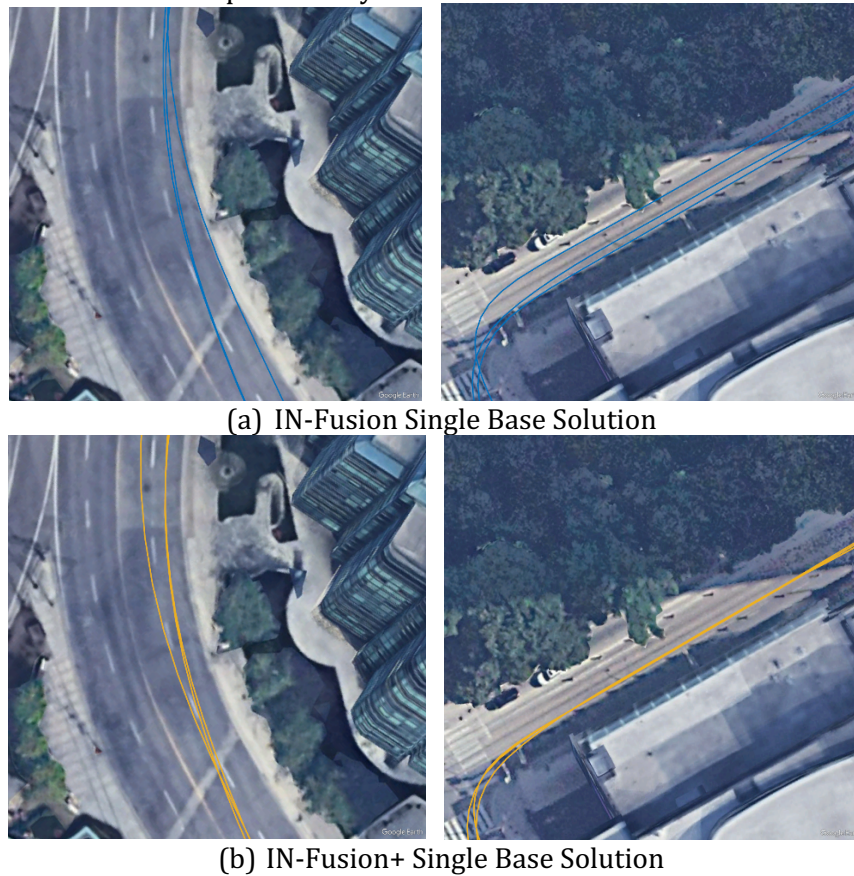


Figure 4: Horizontal SBET Solutions in Dense Urban Areas

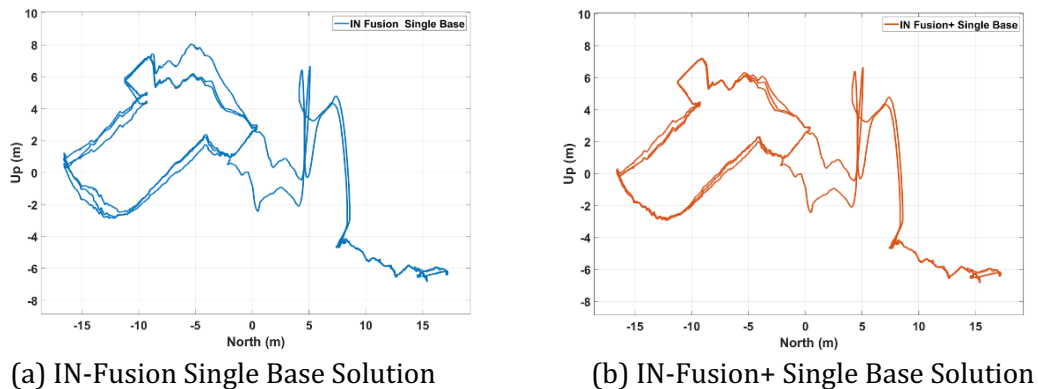


Figure 5: Vertical vs North SBET Solutions in Dense Urban Areas

5. Urban Navigation Accuracy Assessment

This section presents the positioning accuracy and performance assessments of Trimble's Applanix POSPac aided-inertial software for urban HD mapping and autonomous navigation applications. The Applanix IN-Fusion and IN-Fusion+ Single Base positioning solutions were assessed against the reference trajectories for 38 downtown Toronto datasets (equivalent to 72 hours of data).

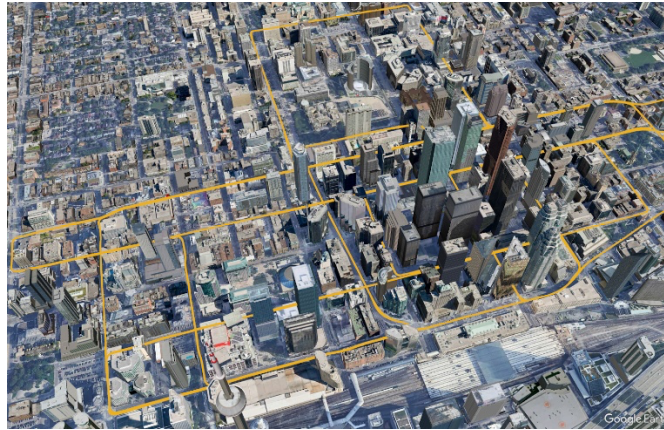


Figure 6: Test Trajectories in Downtown Toronto

The test trajectories loop through the core downtown Toronto areas multiple times as shown in Figure 6. With plenty of skyscrapers and various height buildings from low-rise, multi-story to high rise, downtown Toronto provides extremely challenging and variously degraded GNSS signal reception conditions and hence serves as a great environment for evaluating the aided inertial positioning performance for urban HD mapping and autonomous navigation applications. A base station located within 10 km from the test trajectories was used to collect the base GNSS data for short-baseline RTK processing. The reference trajectories were generated using the post-processed GNSS RTK-aided inertial positioning solution with the use of the highly accurate navigation grade IMUs.

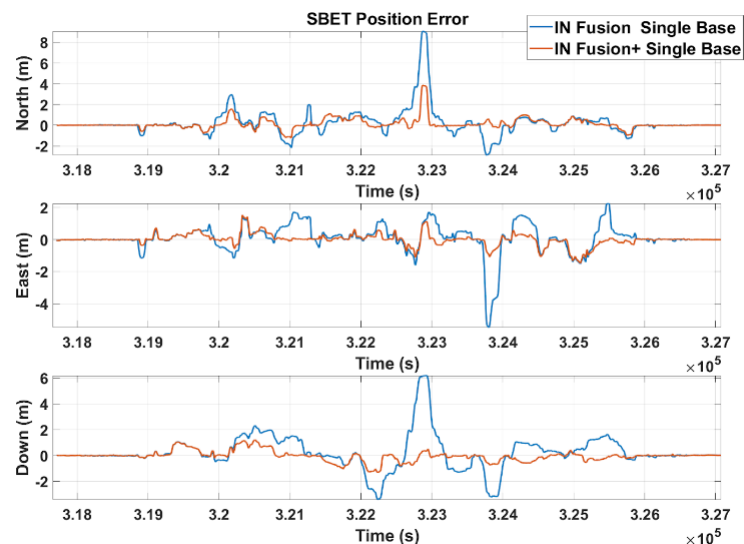


Figure 7: SBET Position Errors for One Dataset

Figure 7 shows the POSPac SBET position errors when processing a downtown dataset collected by Trimble Applanix LVX product with MEMS IMU using IN-Fusion Single Base and IN-Fusion+ Single Base technologies, respectively. It can be seen that the IN-Fusion+ technology has significantly reduced position error drifts and continuously maintained the SBET position

accuracy of a cost-effective Trimble Applanix LVX product throughout the GNSS challenging environments whereas the previous generation IN-Fusion Single Base solutions suffer larger position error drifts in core downtown Toronto areas.

Figure 8 shows the POSpac SBET 3-Dimensional (3D) position error Cumulative Distribution Function (CDF) using IN-Fusion Single Base and IN-Fusion+ Single Base technologies when processing all the downtown Toronto datasets collected by Trimble Applanix (a) LVX and (b) AP+ 30 products, respectively. Both products use cost-effective MEMS IMU with next generation survey-grade GNSS receivers. The product specifications of Trimble Applanix LVX and AP+ 30 are available at [9] and [10]. The CDF completely describes the distribution of the SBET position errors. For example, the CDF of the SBET position error at x gives the probability y that the SBET position error is less than or equal to that number x . Therefore, the higher the probability y or the closer to the top-left corner the CDF, the better the SBET position accuracy. As shown in Figure 8 and Figure 9, the IN-Fusion+ Single Base technology has provided more accurate and robust SBET position solutions than the previous generation IN-Fusion Single Base technology in dense urban environments.

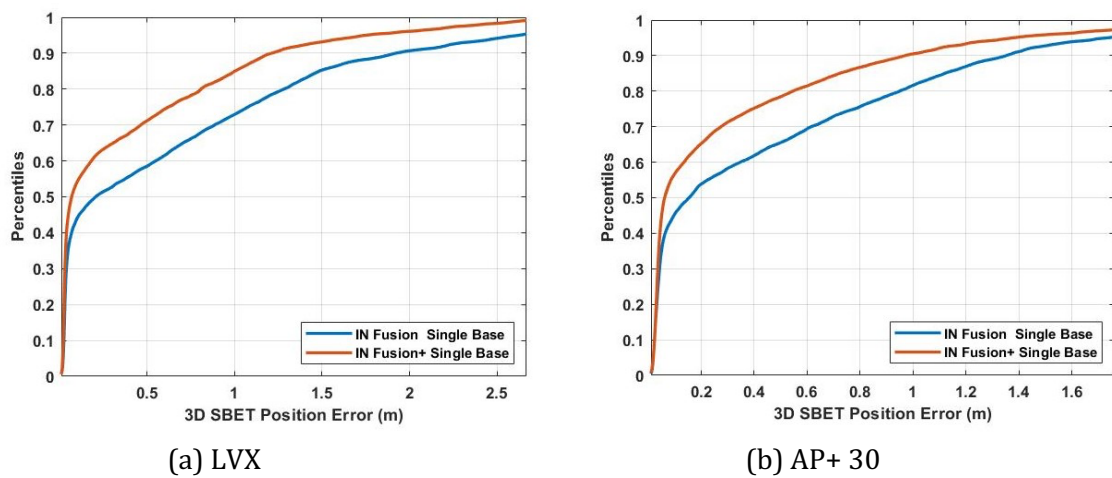


Figure 8: SBET Position Errors CDF

Table 1 compares the Applanix IN-Fusion Single Base with Applanix IN-Fusion+ Single Base SBET position solution accuracy in dense urban environments for Trimble Applanix LVX and AP+ 30 products, respectively. Comparing to the IN-Fusion Single Base solution, the one sigma (68%) 3D SBET position error of the IN-Fusion+ Single Base solution in dense urban environments has been reduced from 64.01 cm to 31.86 cm equivalent to 100.89% improvement for Trimble Applanix LVX products and from 43.17 cm to 19.96 cm equivalent to 116.22% improvement for AP+ 30 products, both using cost-effective solid-state MEMS inertial sensors. The net result is the more accurate and robust spatial knowledge solution with the cost-effective approach for the highest level of productivity in urban HD mapping and autonomous navigation can be achieved by using Trimble Applanix POSpac 9 software powered by Applanix IN-Fusion+ technology.

Table 1
SBET Position Accuracy and Improvement

System	SBET 3D Position Error (68%)		Single Base	SBET Position Accuracy Improvement
	IN-Fusion Single Base	IN-Fusion+ Base		
LVX	64.01 cm	31.86 cm		100.89%
AP+ 30	43.17 cm	19.96 cm		116.22%

6. Conclusions

Trimble ProPoint GNSS technology is Trimble's latest precise GNSS processing engine that not only fully supports all modernized satellites and new signals but also effectively mitigates multipath errors and outliers in GNSS challenging environments. Trimble Applanix POSPac 9 aided-inertial software has tightly integrated Trimble ProPoint GNSS technology into Applanix IN-Fusion+ engine to deliver robust and accurate land navigation solutions in all environments. Real-world results from over 72 hours of data collected in dense urban environments shows the significant POSPac SBET performance improvement when using the Applanix IN-Fusion+ technology compared to the previous generation solutions. Seamless and robust spatial knowledge solutions with position accuracy of 20~30 cm can be achieved by using the aided MEMS inertial post-processing solutions generated by Applanix POSPac 9 software which offers the highest level of productivity with the most cost-effective approach in urban HD mapping and autonomous navigation.

References

- [1] Hutton, J., and Mostafa M.: 10 Years of Direct Georeferencing for Airborne Photogrammetry. Photogrammetric Week 2005, Stuttgart, Germany, 2005.
- [2] Scherzinger, B.: Precise Robust Positioning with Inertial/GPS RTK. Proceedings of the 13th International Technical Meeting of the Satellite Division of The Institute of Navigation, Salt Lake City, UT, September 2000, pp. 155-162.
- [3] Scherzinger, B.: Inertially Aided RTK Performance Evaluation. Proceedings of the 15th International Technical Meeting of the Satellite Division of The Institute of Navigation, Portland, OR, September 2002, pp. 1429-1433.
- [4] J-H. Wang, Intelligent MEMS INS/GPS Integration for Land Vehicle Navigation (Geomatics Engineering), Ph.D. thesis, University of Calgary, Calgary, Canada, 2006.
- [5] Wang, Y. and Julien O.: Low Cost Precise Navigation in Urban Area with Multi-Constellation GNSS and Inertial-Aiding. Proceedings of the 2018 International Technical Meeting of The Institute of Navigation, Reston, Virginia, January 2018, pp. 502-520.
- [6] B. Hofmann-Wellenhof, H. Lichtenegger, and J. Collin, GPS Theory and Practice, 5th ed., Springer-Verlag, New York, NY, 2001.
- [7] P. Misra, and P. Enge, Global Positioning System: Signal, Measurement, and Performance, Ganga-Jamuna Press, Lincoln, MA, 2001.
- [8] Teunissen, PJG: Least Squares Estimation of the Integer GPS Ambiguities, Delft Geodetic Computing Center (LGR) 16p. Invited Lecture, Section IV Theory and Methodology. IAG General Meeting, Beijing, China, August 1993.
- [9] Trimble Applanix, Trimble POS LVX Datasheet, 2018. URL: https://www.applanix.com/downloads/products/specs/POS_LVX-Datasheet.pdf
- [10] Trimble Applanix, Trimble AP+ 30 Land Datasheet, 2022. URL: <https://www.applanix.com/downloads/products/specs/ap-plus-land/AP-plus-30-land.pdf>